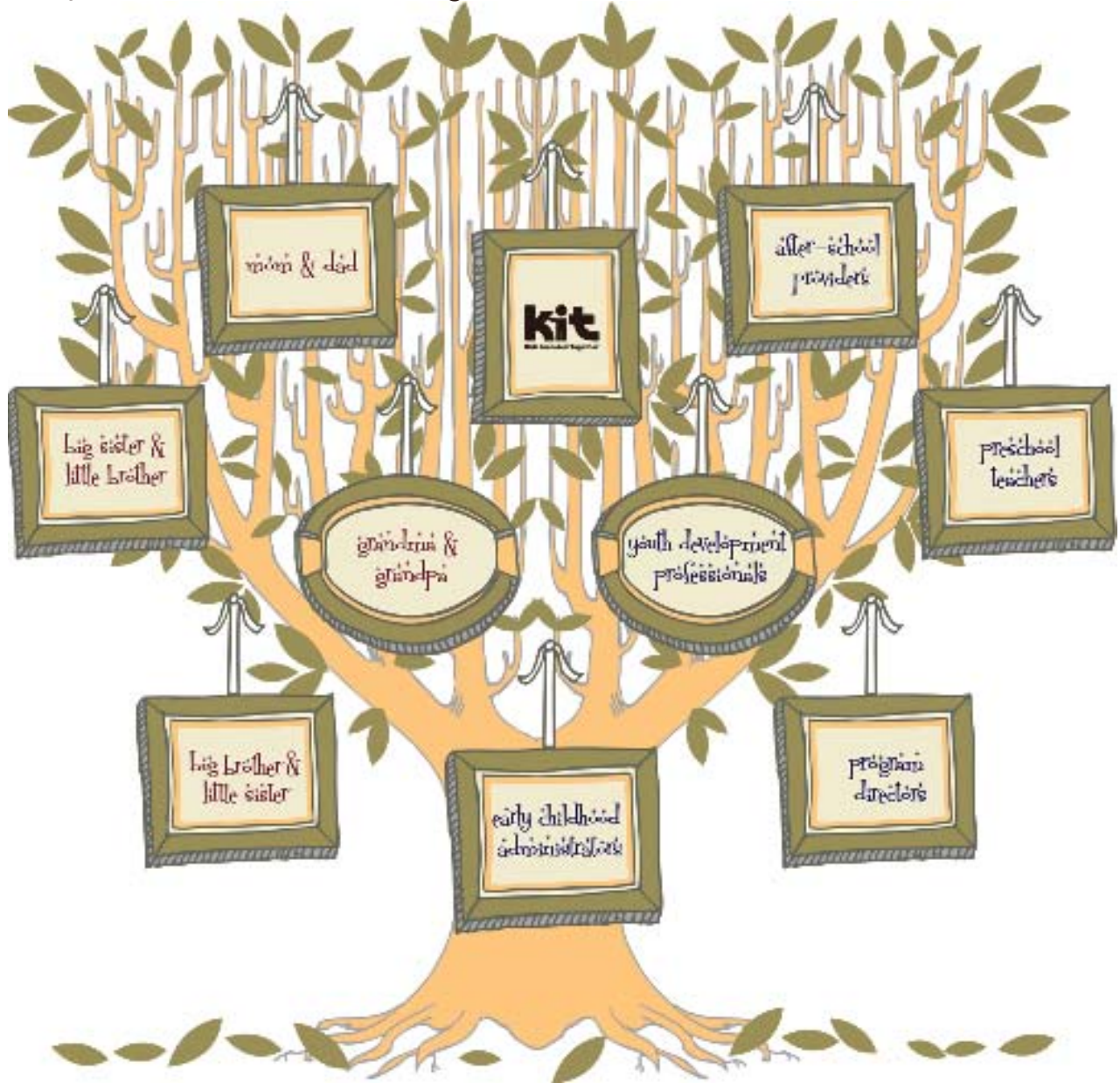


# Inclusion Symposium

## Dual Support: Strategies for Working with Children and Their Families

Sponsored by the San Diego County Child Care and Development Planning Council County Office of Education

Join us at KIT's National Training Center on Inclusion (NTCI) for a 1.5 day symposium on including and supporting children with disabilities in early childhood and school-age programs. The symposium will focus on communicating effectively with families and helping children learn how to solve their problems in an inclusive setting. Registration is limited - first come first served • [kitonline.org/ntci](http://kitonline.org/ntci)



The mission of Kids Included Together (KIT) is to support recreational, child and youth development programs that include children with and without disabilities.

### Speakers

Thursday, March 11, 2010 1:00pm - 4:00pm

Mike Ashcraft, Founder and CEO of Children's Choice Child Care Services

Friday, March 12, 2010 9:00am - 4:00pm

Dennis Bumgarner, ACSW, LCSW, The Behavior Coach



# Inclusion Symposium

## Dual Support: Strategies for Working with Children and Their Families

Sponsored by the San Diego County Child Care and Development Planning Council County Office of Education

Attendee Name \_\_\_\_\_

Title \_\_\_\_\_ Phone \_\_\_\_\_ Fax \_\_\_\_\_

Agency \_\_\_\_\_

Address \_\_\_\_\_ City \_\_\_\_\_ State \_\_\_\_\_ Zip \_\_\_\_\_

Email \_\_\_\_\_

Registration. One form per individual. Please check the appropriate box(es). KIT CEU's available at the symposium, \$15.00.

Thursday & Friday, March 11 & 12, 2010 \$65.00  
\* Includes symposium, materials, Thursday refreshments, Friday continental breakfast & lunch.

I request vegetarian meals.

Please check here if you require accommodations due to a medical condition or disability and submit before February 19, 2010. You will be contacted by KIT staff for details.

Payment (please select your method of payment)

Check or P.O. #: \_\_\_\_\_ (make payable to KIT) Billing Zip Code: \_\_\_\_\_

Credit Card: Visa Mastercard Discover Amount to be Charged: \$ \_\_\_\_\_

Credit Card #: \_\_\_\_\_ Expiration Date: \_\_\_\_\_

Name on Card: \_\_\_\_\_ Signature: \_\_\_\_\_

Forms received without payment will not be processed • Please send completed form with payment to:

Kids Included Together • 2820 Roosevelt Road, Suite 202 • San Diego, CA 92106 • Fax 619.758.0949

KIT accepts Visa, Mastercard, Discover, P.O.'s and checks made payable to KIT

Questions? Email [info@kitonline.org](mailto:info@kitonline.org), call 858.225.5680 or visit [kitonline.org/ntci](http://kitonline.org/ntci)

